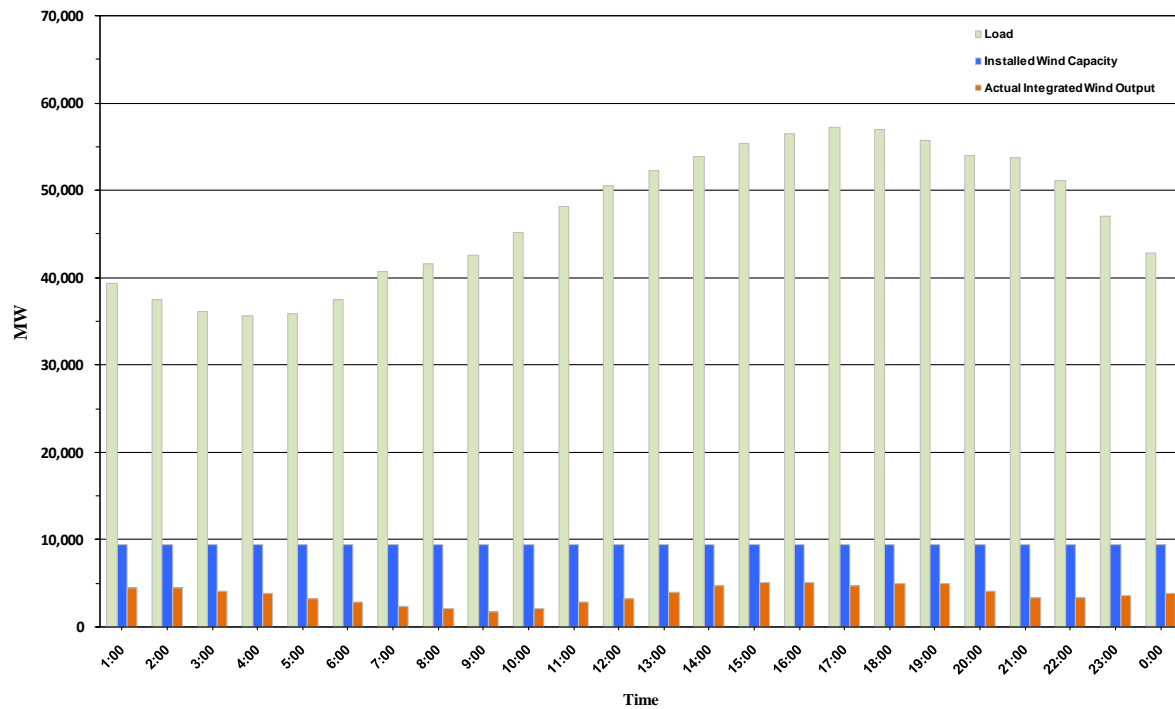




ERCOT Grid Operations Wind Penetration Report: 08/30/10

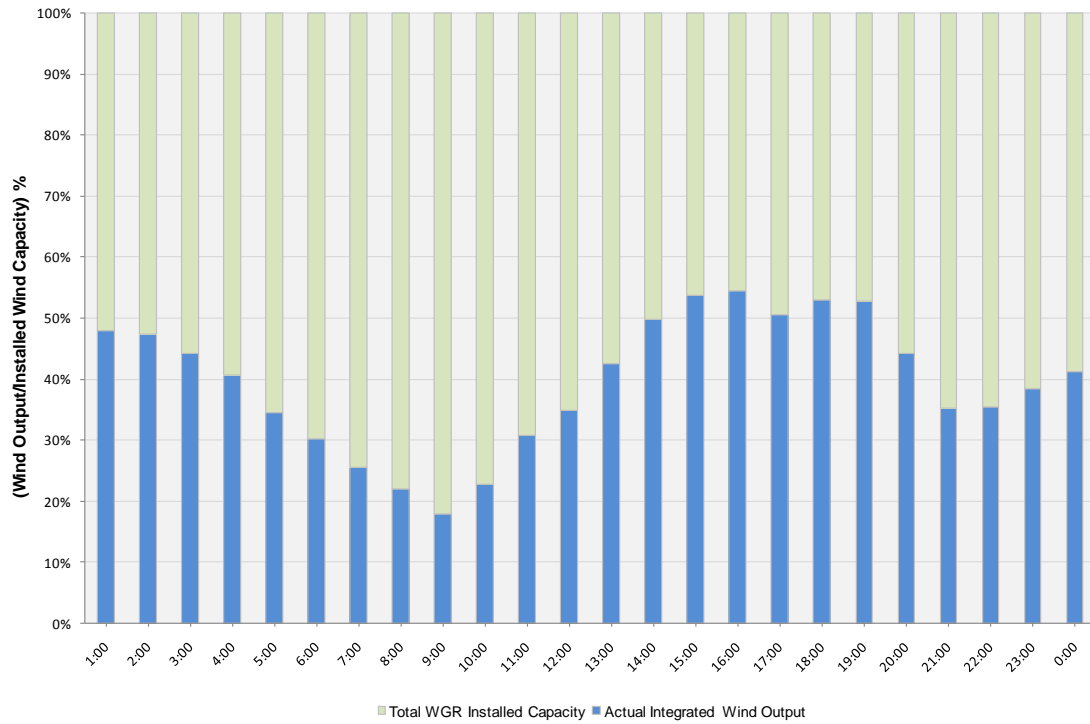
Peak Load	57,246 MW
Load Peak Hour	17
Wind Record 06/12/10	7016 MW
Max Wind value	5395 MW
Wind Peak Hour	15:40:44
Wind Penetration %	9.50

Hourly Average Actual Load vs. Actual Wind Output
08-30-2010

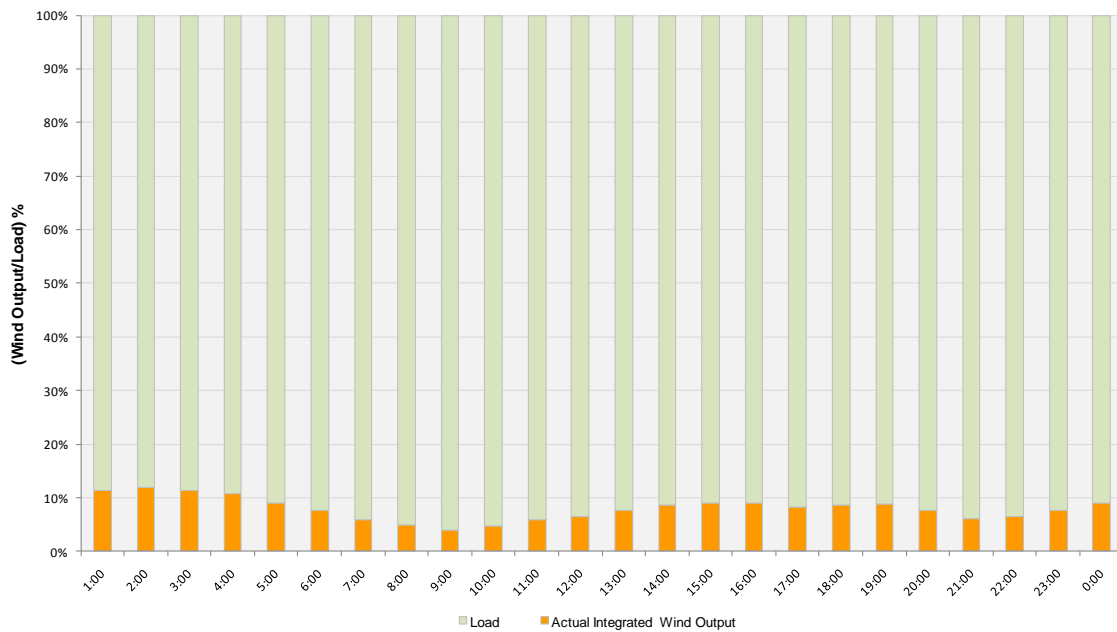




Actual Wind Output as a Percentage of the Total Installed Wind Capacity
08-30-2010



Actual Wind Output as a Percentage of the ERCOT Load
08-30-2010





ERCOT Load vs. Actual Wind Output 08/23/10 - 08/30/10

